

In This Issue:

1. Message from the President
2. Upcoming events
3. Rosie Zuloaga, Programs-In-A-Box, Membership news
4. Women's Transitional Living Center
5. Sponsors, How to stay updated

NAWIC



NAWIC OC BOARD

- President** Jennifer VanBreda
jenniferv@calsystemsinc.com
- Vice President** Lisa Bates
lbseabold@gmugeo.com
- Treasurer** Janet Zeigler
Ajleyva4@gmail.com
- Secretary** Rosi Zuloaga
rzuloaga@simplexgrinnell.com

Directors

- Lynne MacVean Missy Siciliani
lynne@mammothelectric.com missy@atlas-allied.com
- Catherine Cardona Jennifer Hernandez
catherine_cardona@mcgraw-hill.com jhernan6@wm.com

Parliamentarian

Janice Ramsey-Gonzales

NAWIC OC COMMITTEE CHAIRS

- CP&E Chair** Carri Morones
cjmorones@yahoo.com
- Membership** Molly Huddleston
molly.huddleston@clarkconstruction.com
- Ways & Means** Jennifer Hernandez
jhernan6@wm.com
- Missy Siciliani
missy@atlas-allied.com
- MAGIC Camp** Molly Huddleston
molly.huddleston@clarkconstruction.com
- Lynne MacVean
lynne@mammothelectric.com
- Block Kids** Rosi Zuloaga
rzuloaga@simplexgrinnell.com
- Scholarship** Carri Morones
cjmorones@yahoo.com
- CAD Drafting** Izzy Zandvliet
izziz@ci.garden-grove.ca.us
- PR & Marketing** Lauren Robbins
lrobbins@sterlingplumbinginc.com

Presidents Message

The holidays are around the corner. Our chapter is getting into the spirit of the season. We have raised funds to assist in decorating a Christmas tree that will be auctioned off to help support the Eli House. During our November meeting, you will all be asked to take the name of a child who is residing at the WTLC, Women's Transitional Living Center. During this time of year, we all need to be thankful for what we have, our families and friends, health and happiness, and remember those less fortunate. One small thing can effect someone's day. Step aside for an elderly person walking in the store, let the person with a small child go to the head of a line, even opening the door for someone who has their hands full. We may not be able to donate time or money, but a simple smile will work wonders. A meaningful smile can change a person's outlook for the day. Use the "pay it forward" theory and see what comes back your way. Keep a positive energy around you and it will spread to others. Enjoy the season, and enjoy your family and friends and remember to give back to your community.

Jennifer VanBreda
Chapter #91 President

NAWIC Pledge:

As a material for the construction of our building, I pledge the agility of my hands and the ability of my mind, and the integrity of my heart.

Core Values:

- Believe in ourselves as women
- Persevere with the strength of our convictions
- Dare to move into new horizons



Dinner Meeting

October 15, 2011

Linda Hoitt, Business Consultant
Orange County SBDC

Demystifying Woman Owned Business Certifications

- Learn what woman certifications are available and which are right for you.
- What are the benefits?
- Do you qualify?
- What is the process to get certified?

Linda Hoitt joined the Orange County Small Business Development Center (SBDC) in 1996 to provide business counseling services for business owners and entrepreneurs. With almost 20 years of business and management experience, she specializes in business development, marketing, financing, and state and local government contracting.

May 4-5, 2012

Annual Forum – Friday and Saturday, May 4-5, 2012 Lake Arrowhead Resort, Lake Arrowhead, CA – Hosted by the San Bernardino-Riverside Chapter Registration and Hotel Reservation Deadlines – To Be Announced

Aug. 29 - Sept. 15, 2012

Annual Convention – Wednesday through Saturday, August 29 – September 15, 2012 Sheraton Denver Downtown, Denver, CO Registration and Hotel Reservation Deadlines – July/August 2012

Anniversaries

November

Carri Morones- 14 years

Gerry Robbins- 37 years

Janet Zeigler- 1 year

December

Janice Ramsey-Gonzales-24 years



Remarkable Women 2011

This year the National Association of Women Business Owners (NAWBO) celebrated their 16th Annual NAWBO-OC Awards "Inspiration Courage & Hope". This event is designed to celebrate the achievements of three outstanding women business owners. It is also an opportunity to honor women who have made a significant contribution to our community through community service clubs, non-profit organizations, and professional service organizers. Among those women honored was NAWIC Orange County Chapter #91 member Rosie Zuloaga. Rosie was selected by our Chapter for her spirit of volunteerism and contributions while promoting the efforts of the National Association of Women in Construction. Congratulations, Rosie!

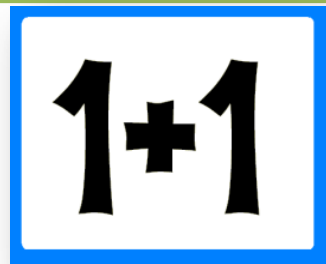
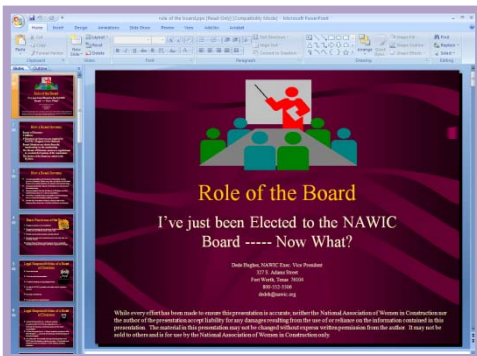
NAWIC.org – A Valuable Resource This Month's Feature: Programs-In-A-Box

One of the many benefits of NAWIC membership is the website itself. Once you log in you will find that there is so much information you will need to make several visits. If you have not been here in a while it is a good idea to check to make sure your information is current and correct. Right under the "Welcome" greeting at the top right is the link to "Member Center". Click on it then look to the column on the left side of the page. Along with the link to "Update Your Info" you will find one for "Programs-In-A-Box" towards the end of the list. Go ahead and click on it.

The "Programs-in-a-Box" were designed for NAWIC Chapters or Regions to use at their meetings when they don't have a professional speaker. They are also a great way to learn more about NAWIC and the other topics covered, including: Accounting 101 for Chapters; Blueprint Reading; Chapter Overview; Effective Safety Program; Effective Teambuilding; Getting the Most out of your NAWIC Membership; Marketing Passion the NAWIC Way; NEF Overview and Partnering Power. This is just a partial list!

In order to use the programs, you must have Microsoft Power Point®, or Power Point Viewer®, installed on your computer.

The national web site has answers to almost any NAWIC question you could come up with. If you can't find it send an email to nawic@nawic.org for more information.



Membership

"Orange County Chapter 91 is actively pursuing new members. Following the National NAWIC theme of 1+1 is a no brainer. Stop and think for one minute about women employed by a vendor, subcontractor, insurance agent, bonding agent, supplier doing business with your company.

YOU KNOW SOMEONE, AND THAT SOMEONE KNOWS SOMEONE.

Please extend this the invitation for an opportunity to be introduced to an organization as dynamic as NAWIC. Don't forget, the men in your office, their wives may be in the industry or they may be able to refer you to someone. Give them all the NAWIC websites (OC, Regional and National), they will see for themselves what a dynamic organization NAWIC is. Ask me for the NAWIC business card template. Make sure your email signature indicates that you are a member of NAWIC, you will get inquiries from this alone. Get on board 1+1!"

molly.huddleston@clarkconstruction.com



WTLC Christmas Wish List

We just received the wish list of Women and Children that are in the WTLC shelter system. This is the shelter that our chapter sponsors a room. This list contains 50 women, 31 boys and 47 girls. At the meeting on November 15 we will be asking everyone to take as many names as their budget will allow to purchase gifts and bring to the December 13 meeting. For the last 2 years we have been able to have a gift for every woman and child that is in the shelter and let's hope we can continue that record. Please ask your co-workers and friends to help with the names that you get at the meeting. This is the largest list we have ever received so we will need every member to help. Please ask your Company if they will donate a check toward this cause and we can purchase gift cards at Target to give to the women so they can purchase things they need. The women so often get forgotten during the season.

If you are unable to come to the meeting but would like to participate please contact Gerry Robbins at (714)641-5488 or grobbs@sterlingplumbinginc.com.

To learn more about WTLC, please visit their website at <http://www.wtlc.org/index.html>



Stay involved in NAWIC throughout the month, not just at dinner meetings. By checking out our facebook, twitter, and youtube you will stay informed about what is going on in chapter #91. Our websites provide such wonderful resources. Please get the most out of your NAWIC membership.



follow us on
twitter



Click to view the website
[NAWIC Orange County](#)
[NAWIC Region 12](#)
[NAWIC National](#)

Thanks to all of our Sponsors

Find out more about becoming a sponsor by clicking [here](#).



Blaisdell Bonding & Insurance Services, Inc.

Please click on the company's logo to view their website

